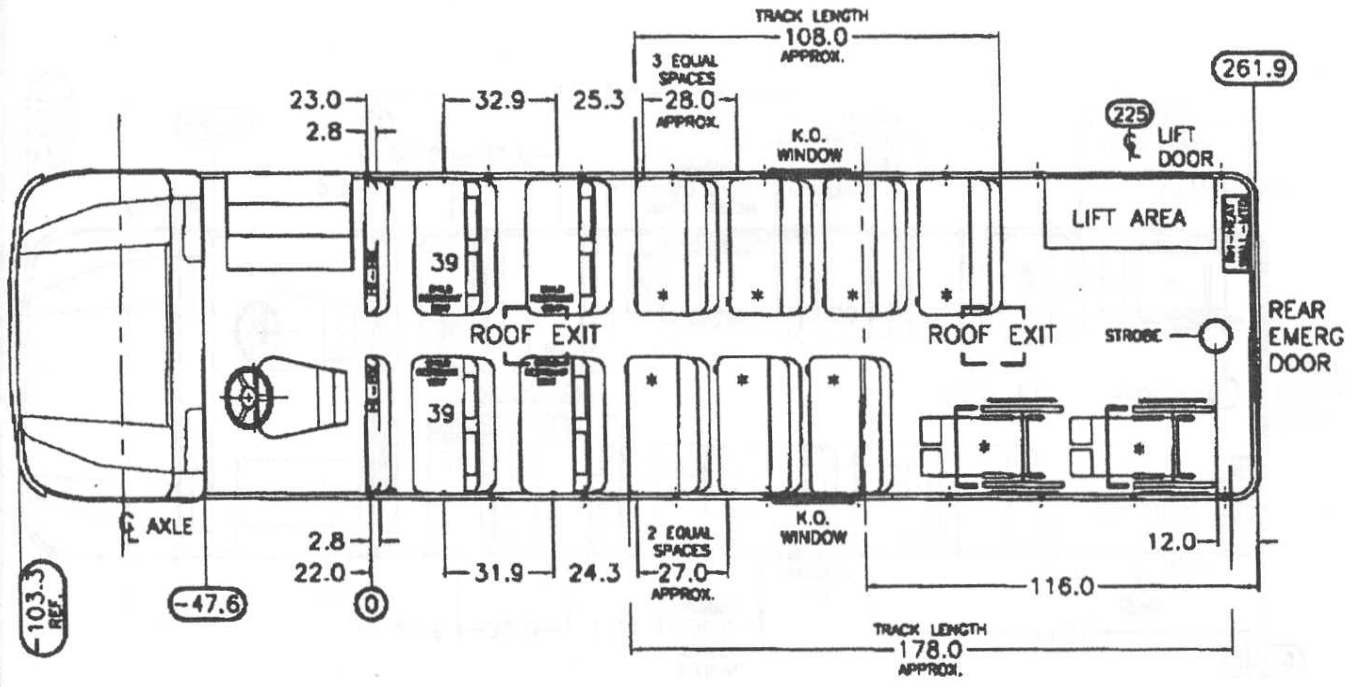


BODY PLAN
WHEELBASE 218"

FLAT FLOOR

PB10500, 25 FT. 11 IN., PLUS 9 FRT., CAP 35, SEAT SIZE 39/39, SEAT SPACING VARIES, LIFT-REAR, 2-WC



49000 / 49000

* 285" : TOTAL TRACK LENGTH (APPROXIMATELY)

* NOTE:
IT IS THE SELLING DEALER'S RESPONSIBILITY TO ENSURE THAT ANY WHEELBASE RE-BUSING SYSTEM SPECIFIED AND DEPICTED ON THIS DRAWING MEETS ALL OPERATIONAL STATE SPECIFICATIONS AND TO ALSO ENSURE THAT THE WHEELCHairs CAN BE PLACED AND REMOVED WITH RESPECT TO SEATS, HEATING, LIFTS, K.O. WINDOWS, REAR EMERG. DOOR, WHEELHOUSES, ETC...
POSSESSION OF THIS PRINT DOES NOT IN ANY WAY OBLIGATE IC CORPORATION TO BUILD THE LISTED SYSTEM.
IC TRACK SHOWN FOR REFERENCE ONLY.

CONFORMS TO FPMSS 217			
BODY PLAN PB10500 25 FT. 11 IN. 35 PASS		NC-29F 1 of 1	